

# **Prefixes, Suffixes, Affixes and Root Words**

A Presentation Created by  
**TEACHERS UNLEASHED**

# Root words and Base words

- Root Words and Base Words are the same.
- Root words and base words are the most basic part of a word.
- If you add an affix to a root or base word you change the meaning of the word.



“Cook” is a base word.

# Affixes

- Affixes are word parts that change the meaning of a root or base word.
- **Prefixes** and **Suffixes** are both Affixes.



un+cook+ed=uncooked

Affix

Affix

# Prefixes

- **Prefixes** are word parts (affixes) that comes at the beginning of the root word or base word.



un+cook+ed=uncooked

Prefix



Affix



# Suffix

- **Suffixes** are word parts (affixes) that come at the **end** of the root word or base word.



un+cook+ed=uncooked

Prefix

Suffix

Prefix: **im-**

Meaning: **not**

## Examples:



impossible



impolite

Prefix: **in**

Meaning: **not**

## Examples:



invisible



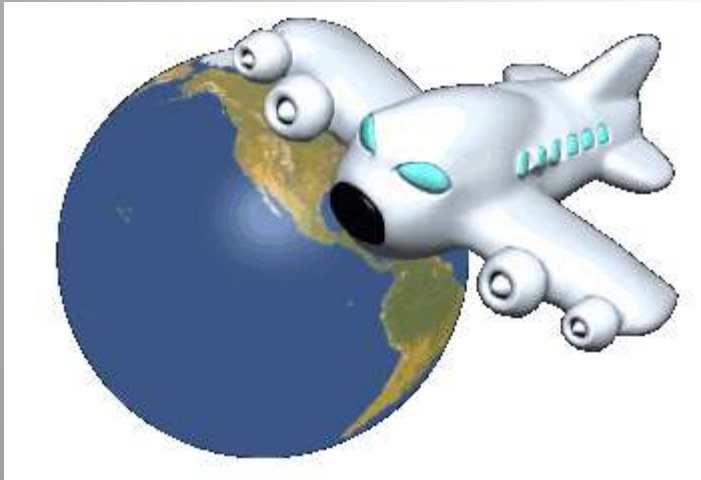
infamous



Prefix: **non**

Meaning: **not**

## Examples:



non-stop



non-stick



Prefix: **dis**

Meaning: **not**

## Examples:



disorganized



disobey

Prefix: **mis**

Meaning: **wrong**

## Examples:



misread

I kan spell gud.



misspell

Prefix: **un**

Meaning: **not**

## Examples:



unlucky



unbelievable

Prefix: **over**

Meaning: **Too much**

## Examples:



overcooked



overdramatic

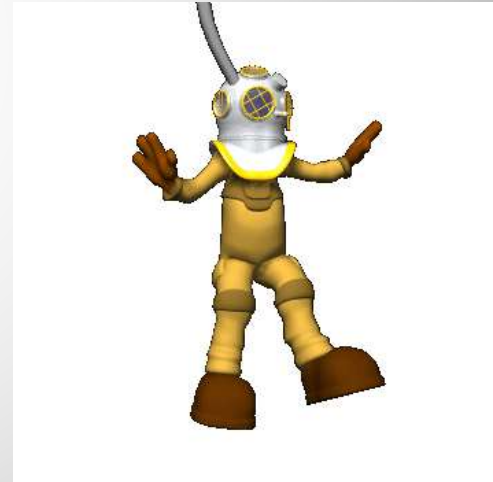
Prefix: **under**

Meaning: **beneath, under**

## Examples:



underwear



underwater



Prefix: re

Meaning: to do again

## Examples:



recycle



recount

Prefix: pre

Meaning: before

## Examples:



preview



preschool



Prefix: **sub**

Meaning: **under**



subordinate

Examples:



submarine

Prefix: **super**

Meaning: **above, over**

## Examples:



superhuman

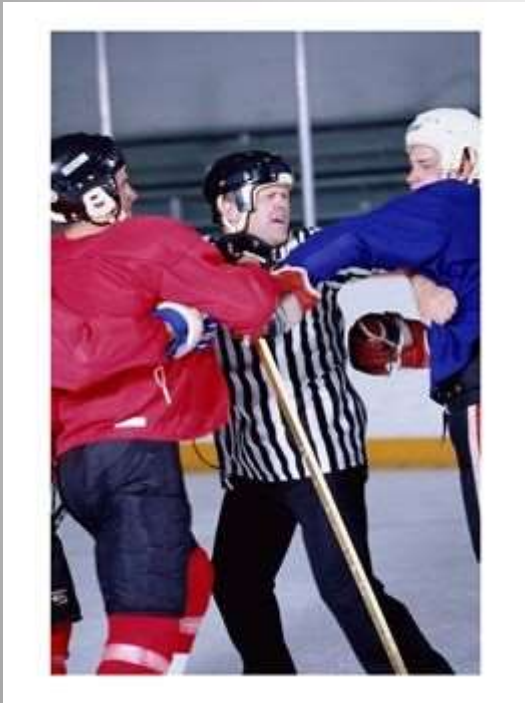


supermarket

Prefix: **inter**

Meaning: **between**

Examples:



intervene



interstate

Prefix: **fore**

Meaning: **before**

## Examples:



forecast



foresee

Prefix: de

Meaning: down, away



descend

Examples:



degrade



Prefix: **trans**

Meaning: **To move**



transfer

Examples:



transportation

Prefix: **semi**

Meaning: **incomplete, half**



semicircle

Examples:



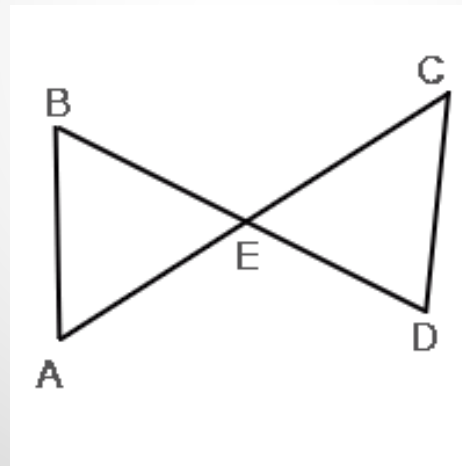
semi-formal



Prefix: mid

Meaning: In the middle

Example:

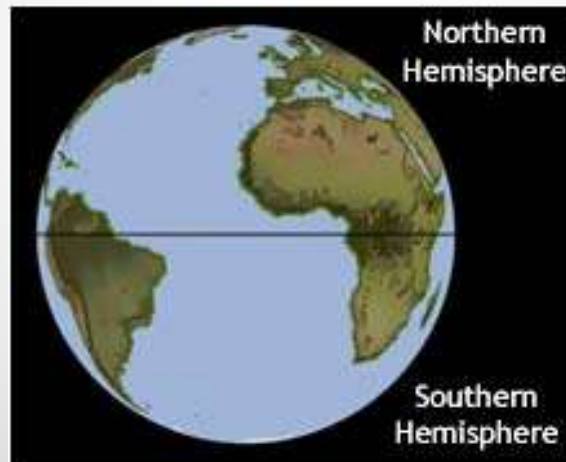


midpoint

Prefix: **hemi**

Meaning: **half**

Example:



hemisphere

Prefix: **pro**

Meaning: **for, forward**



promotion

Examples:



protest

Prefix: **con**

Meaning: **with, together**

## Examples:



connect



confide

Prefix: **com**

Meaning: **together**

## Examples:



community



communicate

Prefix: **ex**

Meaning: **Out of, from**

Examples:



exit



exhale



Prefix: **co**

Meaning: **together**

## Examples:



co-pilot



cooperate



Prefix: **multi**

Meaning: **many**

## Examples:



multicolored

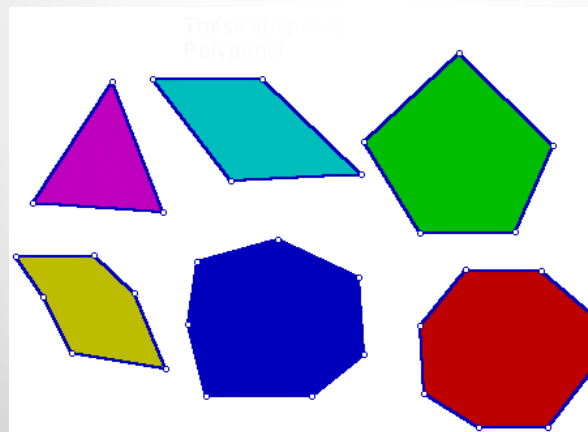


multivitamin

Prefix: **poly**

Meaning: **many**

Example:



polygon

Prefix: uni

Meaning: one

## Examples:



unicycle

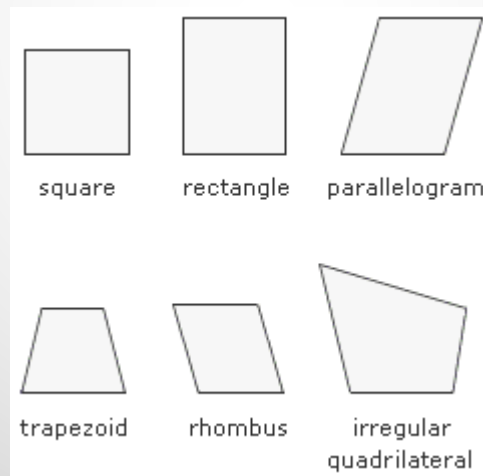


universal

Prefix: **quad**

Meaning: **four**

Example:



quadrilateral

Prefix: tri

Meaning: three

Examples:

trimester



tricycle

Prefix: **milli**

Meaning: **thousand**

Examples:



million



millipede



Prefix: **centi**

Meaning: **hundred**

Examples:

100

years

century



centimeter



Suffix: er

Meaning: one who takes part in

## Examples:



teacher

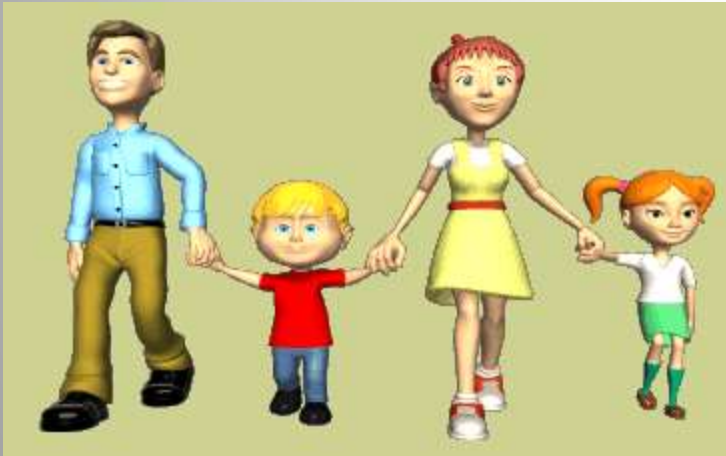


driver

Suffix: **est**

Meaning: **the most**

## Examples:



smallest



strongest

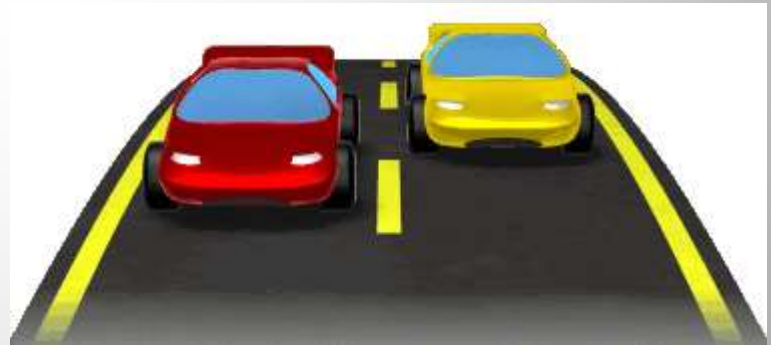
Suffix: **ed**

Meaning: **to have done**

Examples:



played



raced

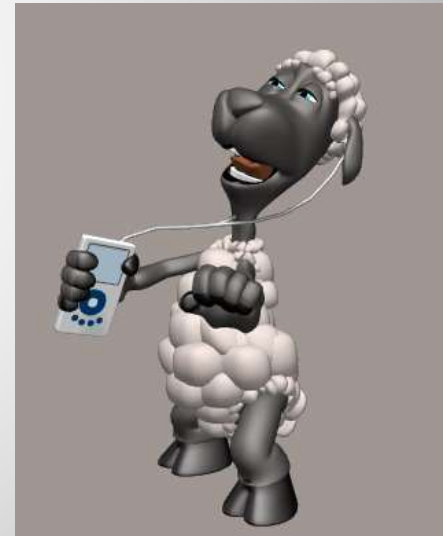
Suffix: **ing**

Meaning: **to be doing**

## Examples:



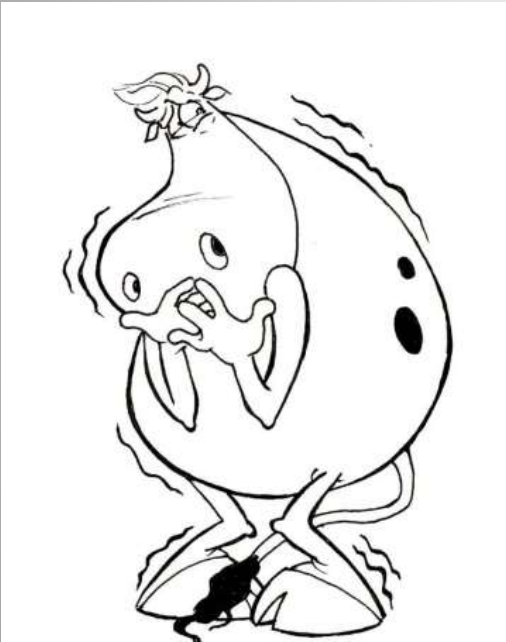
singing



dancing

Suffix: **ly**

Meaning: **like**



cowardly

Examples:



happily

Suffix: ion, tion

Meaning: action

Example:



construction



Suffix: able, ible

Meaning: to be able to

## Examples:



readable



cleanable

Suffix: **ness**

Meaning: **the state of**

## Examples:



happiness



craziness

Suffix: **ment**

Meaning: **the feeling of**

Examples:



contentment



refreshment

Suffix: ous, ious, eous

Meaning: having the quality of

## Examples:



adventurous



curious

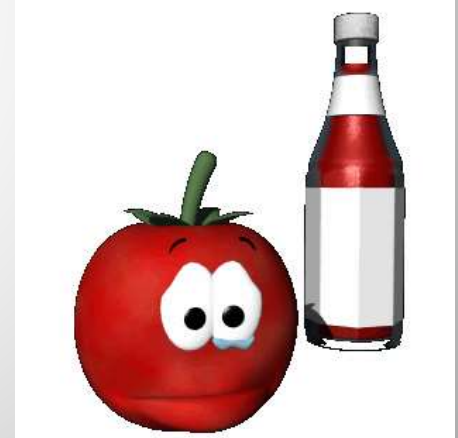
Suffix: **Ive, ative, tive**

Meaning: **condition**

## Examples:



creative



sensitive

Suffix: **ful**

Meaning: **to be full of**

## Examples:



thankful



peaceful



Suffix: **less**

Meaning: **without**

## Examples:



thoughtless

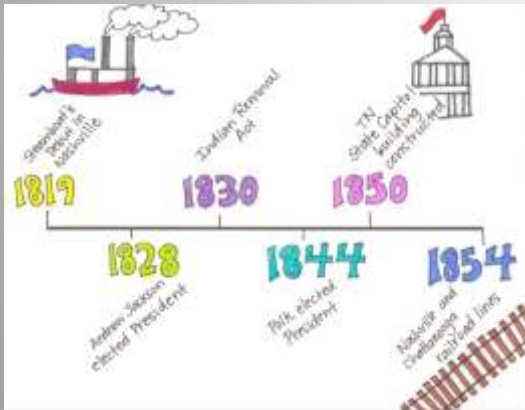


helpless

Root: **chron**

Meaning: **time**

## Examples:



chronologic

synchronize

chronic

Root: **gen**

Meaning: **birth/race**

Example:



generation

Root: **rupt**

Meaning: **break**

## Examples:



rupture

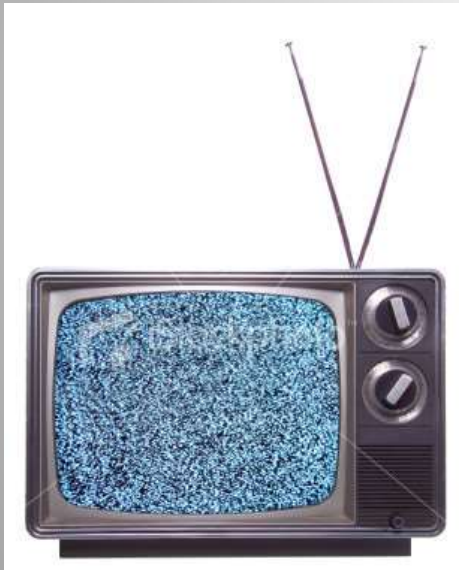


erupt

Root: tele

Meaning: distance

## Examples:



television



telephone



telegraph



Root: **migr**

Meaning: **change/move**

## Examples:



migrate



migrating



Root: **spect**

Meaning: **see**

## Examples:



inspect



suspect



spectator

Root: **sign**

Meaning: **mark**



signal

Examples:



signature

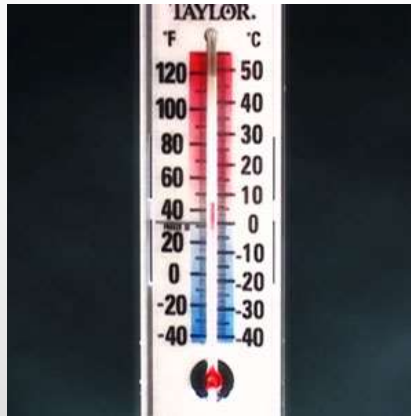
Root: **therm**

Meaning: **heat**

## Examples:



thermal



thermometer



thermostat

Root: **graph**

Meaning: **write**

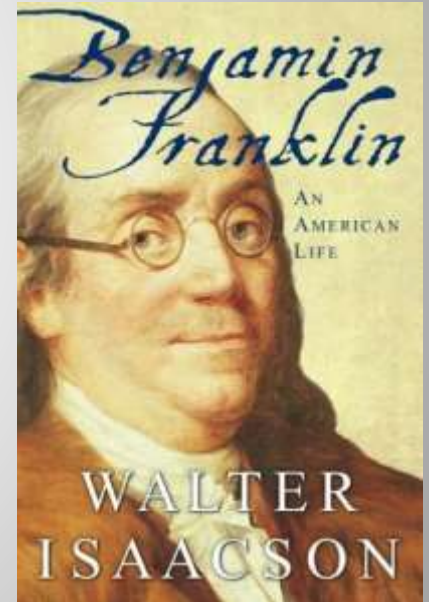
## Examples:



photograph



autograph



biography

Root: **scop**

Meaning: **see**

## Examples:



microscope



telescope



Root: **loc**

Meaning: **place**

Examples:



location



local



Root: **form**

Meaning: **shape**

## Examples:



uniform



transform

Suffix: **ast**

Meaning: **star**

## Examples:



astronaut



astronomy



asteroid

Meaning: sight

Meaning: sight

## Examples:



optical



optometrist

Root: liber

Meaning: free

Example:



liberty

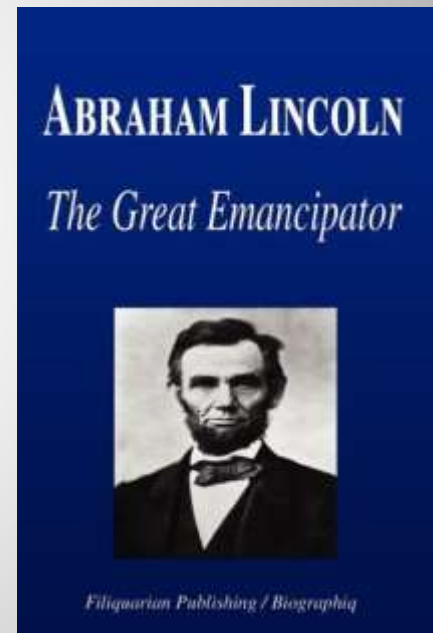
Root: **bio**

Meaning: **life**

## Examples:



biology



biography



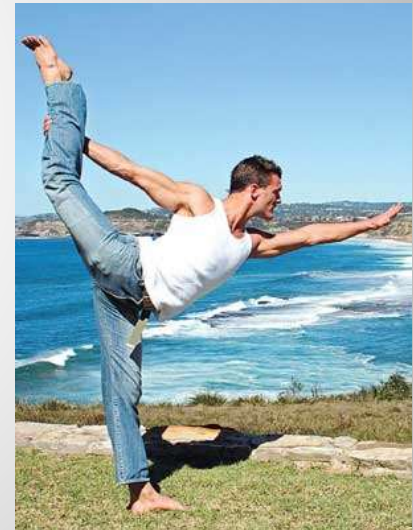
Root: **flect/flex**

Meaning: **bend**

## Examples:



reflection



flexible



Root: **hydr**

Meaning: **water**

## Examples:



hydrant



dehydrate

Root: **geo**

Meaning: **earth**

## Examples:



geography



geology

Root: **aud**

Meaning: **to hear**

## Examples:



audience



audible